



**FEASIBILITY STUDY, PREPARATION OF PRELIMINARY DESIGNS, DETAILED DESIGNS,  
SAFEGUARDS DOCUMENTS AND TENDER DOCUMENTS AND CONSTRUCTION  
SUPERVISION OF SECOND BARICHO – KAKUYUNI WATER PIPELINE AND  
TRANSMISSION PIPELINES TO KILIFI AND GANDA TANKS**

**CONTRACT No.: KE-CWSB-102977-CS-QCBS  
SOCIAL SCREENING REPORT FOR THE PROPOSED LOT 1 – SECOND  
BARICHO\_KAKUYUNI RISING MAIN**



**Prepared By;**



in JV with



and



**October 2021**

**ABBREVIATION**

C- ESMMP	Construction Environmental and Social Management and Monitoring Plan
CSR	Cooperate Social Responsibility
CWWDA	Coast Water Works Development Agency
EMCA	Environmental Management and Coordination Act
ESMMP	Environmental and Social Management & Monitoring Plan
ESMMP	Environmental and Social Management and Monitoring Plan
IDP	Internally Displaced Persons
KIMAWASCO	Kilifi-Mariakani Water and Sewerage Company
MAWASCO	Malindi Water and Sewerage Company
NEMA	National Environment Management Authority
NLP	National Land Policy
OP	Operational Policy
RAP	Resettlement Action Plan
WSDP	Water and Sanitation Development Project

**TABLE CONTENTS**

<b>ABBREVIATION .....</b>	<b>II</b>
<b>LIST OF TABLES .....</b>	<b>IV</b>
<b>LIST OF FIGURES .....</b>	<b>IV</b>
<b>LIST OF APPENDICES .....</b>	<b>IV</b>
<b>CHAPTER 1 : INTRODUCTION .....</b>	<b>- 1 -</b>
1.1 Project Background.....	- 1 -
1.2 Project Location .....	- 2 -
1.3 Project Beneficiaries .....	- 3 -
1.4 Objective of the social Screening Report.....	- 4 -
1.5 Methodology for carrying out RAP Screening .....	- 4 -
<b>CHAPTER 2 : PROJECT DESCRIPTION.....</b>	<b>- 5 -</b>
2.1 Existing Baricho Water Works .....	- 5 -
2.2 Existing Water Supply to Mombasa, Kilifi and Malindi Water Companies.....	- 5 -
2.3 Proposed system.....	- 7 -
2.3.1 Overview.....	- 7 -
2.3.2 Rising main from Baricho water works to Kakuyuni reservoir .....	- 7 -
2.3.3 Kakuyuni Reservoir .....	- 8 -
2.3.4 Electromechanical works.....	- 8 -
<b>CHAPTER 3 .PUBLIC PARTICIPATION &amp; STAKEHOLDER CONSULTATION.....</b>	<b>- 12 -</b>
<b>CHAPTER 4 : .IMPACTS OF THE PROJECT.....</b>	<b>- 13 -</b>
4.1 Positive Impacts .....	- 13 -
4.2 Negative Impacts .....	- 14 -
4.3 Land Take .....	- 14 -
4.4 Loss of livelihood.....	- 14 -
4.5 Impact on trees and crops .....	- 14 -
4.6 Impact on structures.....	- 14 -
4.7 Impacts on Public Health .....	- 14 -
<b>CHAPTER 5 : CONCLUSION AND RECOMMENDATION .....</b>	<b>- 16 -</b>
5.1 Conclusion .....	- 16 -
5.2 Recommendation.....	- 16 -
<b>APPENDICES .....</b>	<b>- 17 -</b>

**LIST OF TABLES**

Table 2-1: Inventory of key energy consuming equipment at Baricho Water Works .....	10 -
---	------

**LIST OF FIGURES**

Figure 1-1: A General Map Showing the Sub Counties within Kilifi County. Source Google maps .	3 -
Figure 2-1: Existing water network from Baricho water works.....	6 -
Figure 2-2: Schematic of the recently concluded works .....	6 -
Figure 2-3: The proposed arrangement of the additional pumps.....	9 -
Figure 2-4: Baricho Water Works 33KV overhead H.T lines and substation .....	10 -
Figure 4-1: Sample photos of the proposed site .....	15 -

**LIST OF APPENDICES**

Appendix 1: Project Layout .....	17 -
Appendix 2: Minutes and Attendance Sheet.....	18 -

## CHAPTER 1 : INTRODUCTION

### 1.1 Project Background

Coast Water Works Development Agency (CWWDA) under the Water and Sanitation Development Project (WSDP) financed by the Government of Kenya and the World Bank intends to implement the proposed water supply project under LOT 1. The LOT 1 works involves transmission pipeline from Baricho pumping station to a proposed reinforced concrete reservoir at Kakuyuni (herein referred to as “The Project”).

The Project is located within Kilifi County. It aims at improving water supply to Malindi, Watamu, Kilifi and Gongoni towns and their surrounding environs including the communities living along the pipeline route within Lango Baya, Kakoneni, Jilore and Kakuyuni centres. The target areas fall within the jurisdiction of two water services providers; namely, Kilifi-Mariakani Water and Sewerage Company (**KIMAWASCO**) and Malindi Water and Sewerage Company (**MAWASCO**). The project will provide a new additional pipeline from Baricho to Kakuyuni, associated electromechanical works and new reservoir at Kakuyuni (Lot 1), transmission mains from Kakuyuni reservoir to Ganda tanks (Lot 2) and transmission mains from Kakuyuni reservoir to Kilifi tanks (Lot 3).

The water source, Baricho Well field, has in the recent past undergone significant expansion and rehabilitation works which has increased its capacity by 22,000 m<sup>3</sup>/day to a total production of 112,000 m<sup>3</sup>/day. Out of the total production, 60,000 m<sup>3</sup>/day will be conveyed to Mombasa City through the Mombasa pipeline and the remaining 52,000 m<sup>3</sup>/day to Malindi, Watamu, Kilifi and Gongoni towns.

The design capacity of the existing Baricho-Kakuyuni line is 30,000 m<sup>3</sup>/day, which is inadequate to deliver the additional amount of water produced. In addition, the capacity of the transmission pipelines from Kakuyuni to Kilifi and Ganda are inadequate and need to be augmented. Consequently, additional parallel pipelines transmission capacity from Kakuyuni to Kilifi and Ganda are required to meet the projected water demands. This report is an Environmental and Social Impact Assessment (ESIA) Comprehensive Project Report (CPR) for the proposed Transmission Pipeline from Baricho to Kakuyuni Tanks (Lot 1).

In order to ensure that the project does not negatively impact the physical, biological, chemical and social environment, CWWDA appointed SARI/SGAPI/GATH JV to undertake an Environmental and Social screening report for the project.

This screening report has been prepared in line with the World Bank OPs

## 1.2 Project Location

The Second Baricho – Kakuyuni Water Pipeline Project, is located in Kilifi County and targets Malindi and Kilifi Sub Counties. Kilifi is one of the six counties in the Coastal region of Kenya and lies between latitude 2°20' and 4°0' South, and between longitude 39° 05' and 40° 14' East and covers a total surface area of 12,610 km<sup>2</sup>. It borders the Counties of Tana River to the North, Taita Taveta to the West, Mombasa and Kwale to the South, Lamu County to the North East and the Indian Ocean to the East.

Kilifi County has seven sub counties, namely; Kilifi North, Kilifi South, Ganze, Malindi, Magarini, Rabai and Kaloleni. It has 17 divisions, 54 locations, 175 sub-locations. Magarini Sub-county is the largest while Rabai is the smallest (figure 1-1 below)

The proposed pipeline will be laid from Baricho wellfield, then along the existing CWWDA wayleave and finally on the C103 (Malindi – Ganda – Kakuyuni Salgate Road) road reserve up to Kakuyuni road reserve. Installation of additional electromechanical works will be carried out at the existing Baricho pumping station, while the construction of a new water reservoir will be done next to the existing water tank at Kakuyuni Boys Secondary School which is a public school.

The sites (CWWDA existing wayleave, C103 road reserve and the site for reinforced concrete reservoir at Kakuyuni High school) ownership for the proposed pipelines and reservoir was verified during consultation and is free from encroachment and therefore no displacement impacts will be triggered as described by World Bank OP 4.12 on Land Acquisition and Involuntary Resettlement.

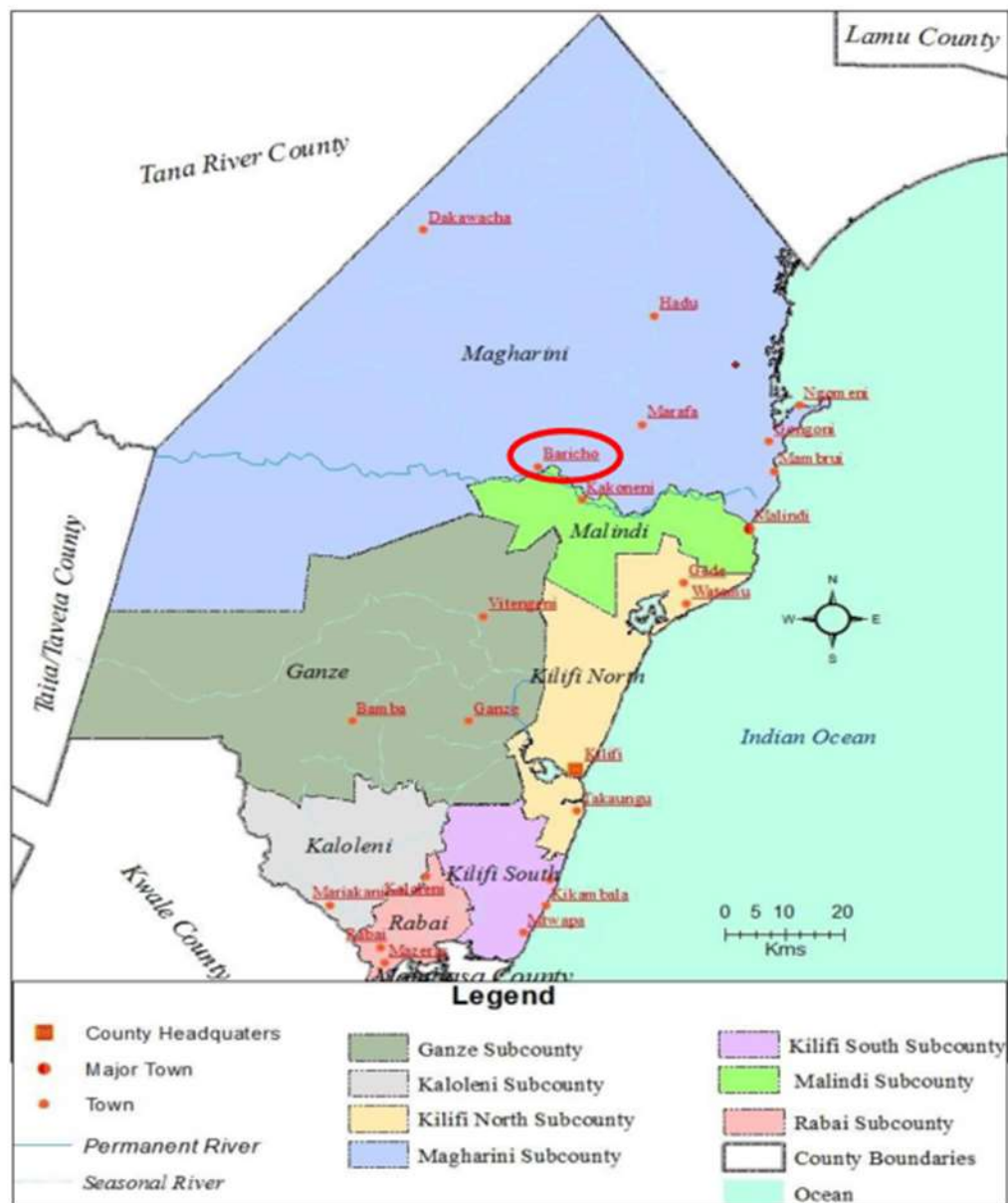


Figure 1-1: A General Map Showing the Sub Counties within Kilifi County. Source Google maps

### 1.3 Project Beneficiaries

Supply of water in Malindi, Watamu, Kilifi, Gongoni towns and their surrounding environs is rationed. The proposed project will augment water supply to the towns and communities along the Pipeline route within Lango Baya, Kakoneni, Jilore and Kakuyuni centers so as to meet the projected water demands in the Water Distribution Master Plan.

Construction of a new reinforced concrete reservoir at Kakuyuni Boys Secondary school will also be a milestone towards stabilizing water supply to the targeted towns and villages.

#### **1.4 Objective of the social Screening Report**

The main objective of this screening process is to identify and highlight the socio economic and/or physical displacement that need to be taken into account in the planning, design, installation of additional Electromechanical works at the Baricho water works, laying of a water pipeline rising main from Baricho water works to the proposed Kakuyuni 5,000m<sup>3</sup> reservoir, construction of a new water reservoir of capacity 5,000m<sup>3</sup> at Kakuyuni and rehabilitation of existing system – replacement of non-functional air valves and associated fittings for the proposed water supply project under Lot 1 of second Baricho Kakuyuni pipeline.

This screening will assist in determining if this sub-project requires a Resettlement Action Plan done before its implementation. The aim is to support the sustainable implementation of the proposed works in the project. The screening was carried out at an early stage of the project (i.e. Pre - Feasibility), in accordance with the requirement for World Bank financed projects.

#### **1.5 Methodology for carrying out the Screening**

Social screening is the first step in the RAP process. It is carried out to establish the resettlement issues that may arise from the proposed project. The screening involved a desktop review of the project features, the baseline conditions and the design components.

Secondly, the Consultant carried out a site visit to the project area in order to conduct a transect walk through the pipeline routes, tank and water kiosk sites in order to establish the need or lack thereof of a RAP.

The findings of these activities are presented in this report.



## CHAPTER 2 : PROJECT DESCRIPTION

### 2.1 Existing Baricho Water Works

Baricho aquifer is located in Kilifi County and 60km west of Malindi town and currently has an installed capacity of 112,000m<sup>3</sup>/day following a recent rehabilitation works that increased the production by 22,000m<sup>3</sup>/day. The water is abstracted from the Sabaki Aquifer (on the banks of the river) which is recharged by Sabaki River. There are eleven (11) wells each with capacity of 470 m<sup>3</sup>/hr grouped into two (2) wellfields with the downstream group consisting of eight (8) wells and the upstream group consisting of three (3) wells. From the wells water is pumped using submersible Low Lift Pumps (LLPs) to a contact tank (capacity of 5,000 m<sup>3</sup>) for chlorination as well as a sump for the High Lift Pumps (HLPs) which deliver the water to Mombasa, Malindi and Kilifi towns. It is noted that according to the Water Master Plan for Water Supply for the Coast Region (Tahal/Bhundia, 2014), the Baricho well field was found to have a potential capacity of 180,000 m<sup>3</sup>/day upon full development by the year 2040.

### 2.2 Existing Water Supply to Mombasa, Kilifi and Malindi Water Companies

The treated water from Baricho plant is evacuated through two (2) pipelines namely: -

- The Sabaki/Mombasa Pipeline (sometimes referred to Baricho/Mombasa Pipeline)
- The Baricho/Kakuyuni Pipeline (sometimes referred to Baricho/Malindi Pipeline)

There are five (5) operational High Lift Pumps (HLP) dedicated to supply Mombasa from the Baricho pump house with three (3) as duty pumps and two (2) as standby pumps. The water is delivered via the Nguu Tatu storage tanks (1No. 18,000 m<sup>3</sup> and 2No. 4,500 m<sup>3</sup> tanks – totaling to 22,500m<sup>3</sup>) using a DN800/600mm diameter, 104 km pipeline (with a capacity of 60,000 m<sup>3</sup>/day). There is also a booster pumping station located at Lower Ribe that supplies water to the Kaloleni area.

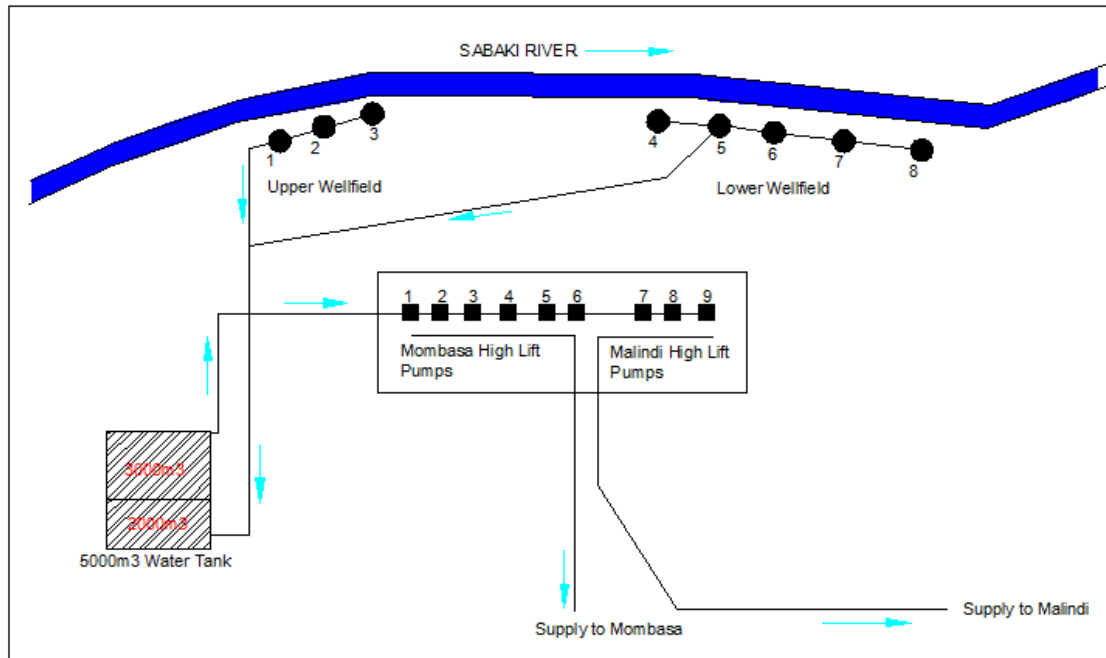


Figure 2-1: Existing water network from Baricho water works

A new pipeline (500 mm diameter, 56 km long, DI) connecting the Kakuyuni terminal reservoir and the Kilifi tank (in Kilifi town) was recently completed in 2019 under Water and Sanitation Services Improvement Program - Additional Financing (WaSSIP-AF). Also constructed under the same project were three new boreholes (9, 10, 11 – see figure below). The pipelines and the boreholes are currently operational.

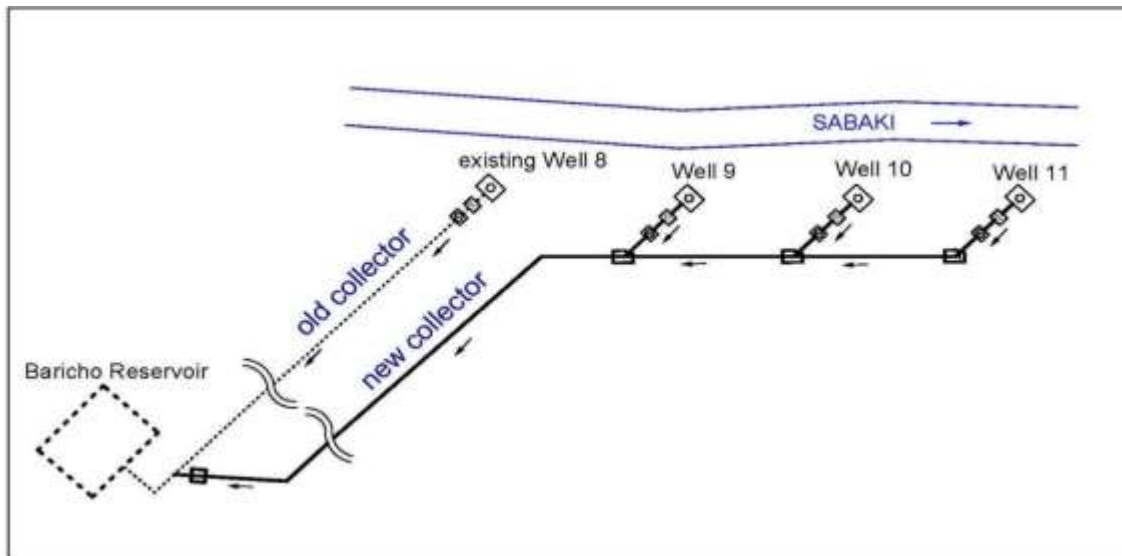


Figure 2-2: Schematic of the recently concluded works

The towns of Malindi, Watamu, Kilifi, Gongoni and the environs receive water supply from Baricho Source Works through the Sabaki-Malindi transmission main. Water is pumped from Baricho to the existing Kakuyuni tank (1,250m<sup>3</sup>) through a 29km, DN 600 rising main (with a carrying capacity of 25,000 m<sup>3</sup>/day). Water flows from the reservoir by gravity to Ganda junction then branches to Ganda and Kisimani reservoirs from where it flows to the supply areas. There are four (4) transmission pipelines from Kakuyuni reservoir namely: -

- Kakuyuni/Ganda pipeline, 12.3km long, diameters ranging 600-500-450-300mm,
- Kakuyuni/Kilifi pipeline, 56km long, diameter of 500mm,
- Kakuyuni/Gongoni pipeline, 37km long, diameter of 400mm,
- Kakuyuni/Watamu pipelines, 17km long and with diameters of (350mm and 200mm).

## 2.3 Proposed system

### 2.3.1 Overview

The proposed project will augment water supply to the towns of Malindi, Watamu, Kilifi and Gongoni and the surrounding environs so as to meet the projected water demands in the Water Distribution Master Plan. This will be achieved through;

- Installation of additional Electromechanical works at the Baricho water works – installation of additional new pumps, surge vessels and associated electrical works;
- Laying of a water pipeline rising main from Baricho water works to Kakuyuni reservoir. The pipeline will be of diameter DN 800mm, steel pipeline, 29km and will be laid mainly along the road reserve of C-103 (Malindi – Ganda – Kakuyuni – Salgate);
- Construction of a new water reservoir of capacity 5,000 m<sup>3</sup> at Kakuyuni. The reservoir will be sited next to the existing water tank and the proposed site belong to Kakuyuni High school
- Rehabilitation of existing system – replacement of non-functional air valves and associated fittings along the existing DN 600mm Baricho-Kakuyuni pipeline.

### 2.3.2 Rising main from Baricho water works to Kakuyuni reservoir

The proposed Second Baricho – Kakuyuni pipeline (29km, DN 800mm) will be a rising main from the Baricho water works to the proposed new Kakuyuni reservoir. There is sufficient space parallel to the existing pipeline where this new pipeline can be laid along the existing CWWDA wayleave and then onto C 103 KeRRA road (Malindi-Ganda-Kakuyuni-Salgate Road). There is no physical or economic displacement anticipated as currently the way leave is free from any form of encroachment. The google overlay below shows the proposed pipeline route, the pipeline route will be along the existing CWWDA wayleave (circled in blue) before joining the C103 KeRRA road reserve upto Kakuyuni.

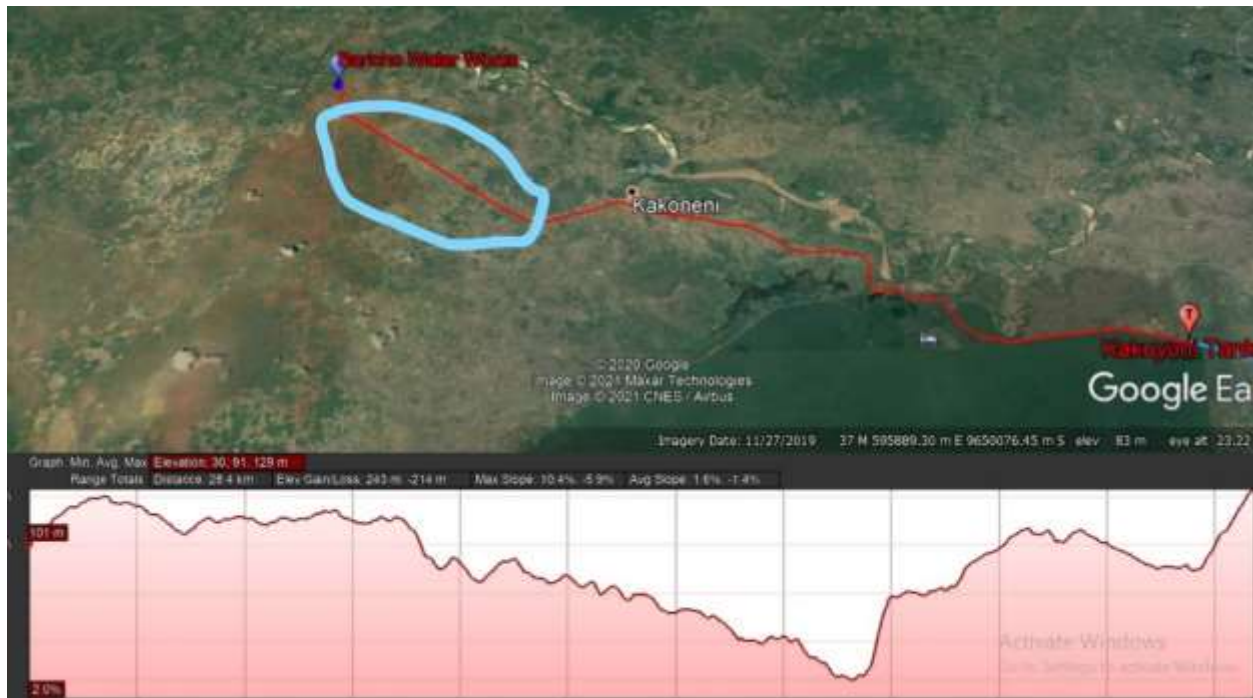


Figure 3: The figure showing the proposed pipeline route from the water works to the proposed Kakuyuni reservoir.

### 2.3.3 Kakuyuni Reservoir

A new Kakuyuni reinforced concrete reservoir with a capacity of 5,000m<sup>3</sup> is proposed to boost the existing tanks and this will require at least 1.5 acres of land. Other supporting infrastructure to be constructed at Kakuyuni will include the following;

- Access road & parking space;
- Site accommodation for the operator
- Fencing and adequate lighting and
- Drainage.

There is no physical or economic displacement anticipated as currently the proposed site which is part of the public school land is covered with a few scattered shrubs and grass.

### 2.3.4 Electromechanical works

#### a) Pumps

There are two sets of high lift pumps in the pump house, the Mombasa high lift pumps and Malindi high lift pumps. The Mombasa high lift pumps are 5 No. and pump the treated water, directly from the delivery pipe, to Nguu Tatu reservoirs (22,500 m<sup>3</sup>), on the outskirts of Mombasa

town, for the Mombasa pipeline whereas the Malindi high lift pumps are 3 No and pump the treated water, from a 3,000m<sup>3</sup> sump tank, to Kakuyuni reservoirs for the Malindi pipeline. The Nguu Tatu and Kakuyuni reservoirs are on their respective high points and supply water to the consumers by gravity. The Mombasa high lift pumps are operated using auto transformer starters and the Malindi high lift pumps are operated using star delta starters.

Additional pumps are set to be installed to feed the new proposed rising main. The proposed pumping arrangement will include 3 No. high lift pumps (two (2) duty and one (1) standby). The pumps will be sited within the existing pump house and will draw water from the 3,000 m<sup>3</sup> sump tank.

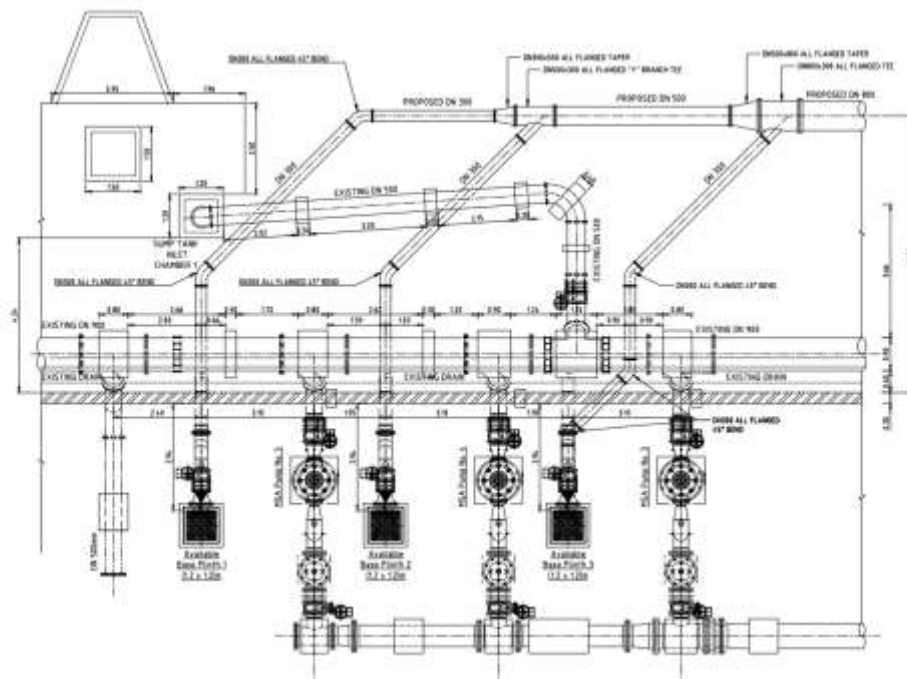


Figure 2-4: The proposed arrangement of the additional pumps

#### b) Power source, distribution and consumption

The Baricho water works power supply is from the utility Kenya power using 2 No. 33 KV overhead H.T lines, one from the Kilifi 132/33 KV substation and one from the Kakuyuni 220/33 KV substation. The one from Kilifi substation proved unreliable and thus the water works was connected to the new line from the Kakuyuni sub station and metered on the CI3 tariff.



Figure 2-5: Baricho Water Works 33KV overhead H.T lines and substation

The key electrical loads at Baricho Water Works are high lift pumps, low lift borehole pumps, office block and staff quarters. The other loads are compressors, lighting and power loads for the other auxiliary buildings which are switch rooms and pump rooms.

Summary of the key energy consuming equipment is as tabulated below:

Table 2-1: Inventory of key energy consuming equipment at Baricho Water Works

Item	Description	Quantity(No of pumps)
1.	Mombasa High Lift Pump pumping capacity of 833m <sup>3</sup> /hr. and a 840KW/3.3KV motor	5
2.	Malindi High Lift Pump pumping capacity of 583m <sup>3</sup> /hr. and a 250KW/415V motor	3
3.	Low Lift Borehole pumps	
	a) Bore hole pump pumping capacity of 470m <sup>3</sup> /hr. and a 135KW/415V motor (boreholes 2, 6A & 8)	3
	b) Bore hole pump pumping capacity of 470 m <sup>3</sup> /hr. and a 160 KW/415V motor (boreholes 1 & 3)	2
	c) Bore hole pump pumping capacity of 470 m <sup>3</sup> /hr. and a 180 KW/415 V motor (boreholes 4, 5 & 7)	3
	d) Bore hole pump pumping capacity of 350 m <sup>3</sup> /hr., each rated 110 kW (boreholes 9, 10 & 11)	3



Item	Description	Quantity(No of pumps)
4.	Surge Vessel Compressor Set for Mombasa line with a capacity of 30 bar and rated at 13.5 kW	1
5.	Surge Vessel Compressor Set for Malindi line with a capacity of 1.05 bar and rated at 6.89 kW	1
6.	Street lighting	
	a) 8 M galvanized single arm lighting pole with 125 W Mercury Vapour lamp	40
	b) 6 M galvanized single arm lighting pole with 125 W Mercury Vapour lamp	22
7.	Office Block	1
8.	Staff Quarters	97

**(i.) Proposed Electrical Works**

- The pumping arrangement will utilize 3 pumps (2 duty and 1 standby). With the 2 No. online pumps this presents an electrical load of 630 kW on the low voltage lines.
- A transformer rated at 2000 KVA is to be installed rated at 33KV/433V to replace TX 4 at the 33 KV switchyard and to supply power to a low voltage panel through an Automatic Voltage Regulator rated at 2000 KVA. The AVR is to regulate the voltage on low voltage panel as the pumping station has been experiencing low voltage which has been damaging equipment.
- A low voltage panel rated at 2000 Amperes is to be established to supply power to the 3 No. pumps. It is intended that the pump motors will be of Variable Frequency Drive (VFD). Space for mounting the low voltage panel will be located in the main pump hall. Further KPLC Ltd is to be contacted for the extra electrical load imposed on their power lines
- A SCADA system to monitor pumping and all electrical parameters is to be incorporated in the electrical control system for the pumping system whereby control functions can be carried out remotely.
- The client is planning to install solar firm in future to cut on the energy cost

### CHAPTER 3 . PUBLIC PARTICIPATION & STAKEHOLDER CONSULTATION

As part of the screening process, the Consultant carried out community consultation forums. The Consultant conducted three meetings, one on May 6, 2021 at Lango Baya sub location and Jilore location and the other two on May 7, 2021 at Kakuyuni sub location and Ganda sub location. The attendees of all meetings comprised of community leaders (the area Chiefs) other local leaders (Balozis) and community members from all local villages.

The Lango Baya meeting comprised of 25 attendees. During the meeting, it was established that the proposed project would use the existing road reserve and the CWWDA acquired way leave for pipe laying hence no individual would be displaced or resettled during project implementation phase. Consultation with KeRRA indicated that the necessary permits be obtained before commencement of construction works along the reserves. The community fully agreed to provide assistance where necessary during implementation.

The Jilore meeting was conducted within the Chief's camp and had 23 people in attendance. The community leaders raised concern over the adequacy of the water to the individual villages, now that the water source (Baricho Wellfields) was a few kilometers away from their households. The residents requested for water provision and provision of a reservoir tank that would fully be serving them.

The Kakuyuni meeting had 22 persons in attendance. Their major concern was the Kakuyuni Boys Secondary School's land that had been selected as the area where the storage tank will be built. They informed the meeting that the school management board and the CWWDA were concluding on negotiation for CWWDA to construct a dormitory for the student as part of the Corporate Social responsibility.

Minutes of the meetings are provided in appendix 2 of this report.



## CHAPTER 4 :. IMPACTS OF THE PROJECT

This section outlines the potential impacts that are anticipated and will be associated with the proposed project activities. The impacts will be related to activities carried out during construction, commissioning, operations, maintenance and decommissioning phases.

### 4.1 Positive Impacts

- Employment opportunities: With the construction of the proposed project, there will be employment opportunities for both professionals and unskilled workers; earnings from the wages will improve their living standards.
- Creation of a market for construction materials - The project will require materials, some of which will be sourced locally and some internationally.
- Economic growth - Through the use of locally available materials
- Injection of money into the local economy: A large sum of the project money shall be released into the local economy due to the construction activities
- Creation of wealth- The proposed project will ultimately provide revenues to the beneficiaries and expand the wealth base for the nation as a whole. Further, the value of land within the project area will rise thus improving on the existing wealth for the residents.
- Improved well-being of women and children: Water accessibility at homesteads would translate to time saving by the women. Time saved thus would be invested in other engagements that could bring financial benefits to the family. Children also bear the brunt of water borne diseases while women are tied down to provide nursing care to the sick family members
- Improved accessibility to clean and reliable water supply-The proposed water supply project Towns of Malindi, Kilifi, Watamu and Gongoni and their surrounding environ including communities along the pipeline route of Lango Baya, Kakoneni, Jilore and Kakuyuni centers. This will reduce the water shortage experienced in the area.
- Improved revenue to both Malindi and Kilifi-Mariakani Water and Sewerage Companies from increased customer base as the proposed project will increase the number of residents being served by the water companies. It will also make the supply reliable thus increasing the revenue base. Further, this will improve sustainability of the companies

## **4.2 Negative Impacts**

### **4.3 Land Take**

The new project interventions project will be implemented on road reserves, CWWDA way leave and at Baricho Boys Secondary School which is publicly owned hence no land will be acquired for the proposed project activities. In addition, there are no encroachers on the proposed new project sites and existing sites where rehabilitation will be undertaken.

### **4.4 Loss of livelihood**

With the provision of safe adequate and reliable water there is envisaged to be minimal negative impact on livelihood of some household this is due to the fact that some residents rely on water provision from water vendors. It will be prudent for the contractor to engage the vendors in available employment opportunities. The vendors should also be sensitized on available ways /means of earning income

### **4.5 Impact on trees and crops**

During the screening it was observed that there will be loss of shrubs and grass (pipeline route and tank site) at the site during clearing. No loss of trees and crops is anticipated. The contractor will avoid cutting trees as much as possible and replant grass in the affected areas after completion of works on site with vegetation

### **4.6 Impact on structures**

No negative impact will be expected during construction as no structures are located within project site land as confirmed during the social screening.

### **4.7 Impacts on Public Health**

Some of the public health issues related to construction works are Covid 19, HIV/AIDS and other communicable and sexually transmitted diseases (STDs). It has been observed that construction works and projects increase disease prevalence through sexual interactions between project staff and local communities. However, camps will be put up that might attract this behavior. The contractor will, as part of each worker's initial orientation and on-going education, provide public education information about Covid 19, HIV/AIDS and prevention measures. Condoms, hand washing water and soap will be made available to project workers at no cost. This impact is however considered minimal



Proposed tank site with a few shrubs



Pipeline route free from encroachment

Figure 4-1: Sample photos of the proposed site

## CHAPTER 5 : CONCLUSION AND RECOMMENDATION

### 5.1 Conclusion

Based on the social screening results, the project has no Project Affected Persons as tank site is publicly owned, the Client will consider construction of a dormitory for the school as a part of corporate social responsibility. This means therefore that

1. In accordance to World Bank OP 4.12 on Land Acquisition and Involuntary Resettlement and the Kenyan Laws, no PAPs were identified by the project.
2. There will therefore be ***no need of carrying out*** a RAP since the project will not be associated with any form of physical and /or economic displacement.

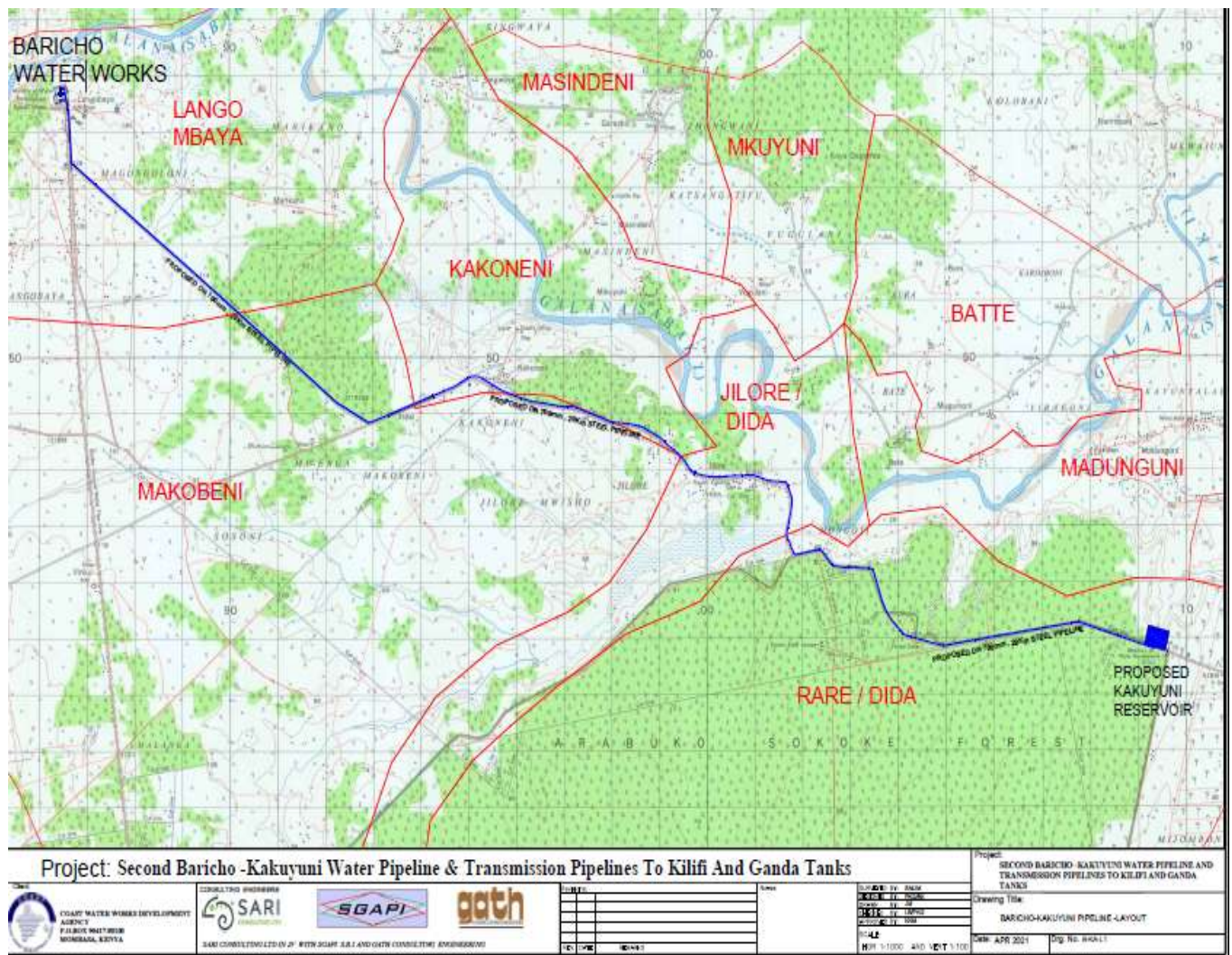
### 5.2 Recommendation

It is recommended that:

- There is no economic or physical displacement anticipated, however, the Contractor will mitigate any anticipated impacts as guided by the Environmental and Social Management Plan provided in the ESIA report in order to ensure protection of social welfare of the members of the community and the environment.
- The client will consider provision of additional water kiosk and installation of water storage tank in each village as requested by the community members during consultations in the project area.

## APPENDICES

### Appendix 1: Project Layout





## Appendix 2: Minutes and Attendance Sheet



**CONSULTANCY SERVICES FOR FEASIBILITY STUDY, PREPARATION OF PRELIMINARY DESIGNS, DETAILED DESIGNS, SAFEGUARDS DOCUMENTS AND TENDER DOCUMENTS AND CONSTRUCTION SUPERVISION OF SECOND BARICHO – KAKUYUNI WATER PIPELINE AND TRANSMISSION PIPELINES TO KILIFI AND GANDA TANKS**

**MINUTES FOR PUBLIC CONSULTATION MEETINGS AND KEY STAKEHOLDERS INTERVIEWS HELD ON 6<sup>TH</sup> MAY 2021 AT LANGO BAYA**

<b>NATURE OF MEETING:</b>	<b>PUBLIC CONSULTATION</b>
<b>PARTIES IN ATTENDANCE:</b>	<b>CONSULTANT &amp; COMMUNITY</b>
<b>DATE:</b>	<b>MAY 6<sup>TH</sup>, 2021</b>
<b>VENUE:</b>	<b>LANGO BAYA</b>

## MINUTES FOR PUBLIC CONSULTATION MEETINGS AND KEY STAKEHOLDERS INTERVIEWS HELD ON 6<sup>TH</sup> MAY 2021 AT LANGO BAYA

### MEMBERS PRESENT- LIST OF ATTENDANCE IS ATTACHED

No.	Name	Organisation	Designation
1.	Boniface Kogi	SGAPI SARI GATH	A.E
2	Lydia Mbogo	SGAPI SARI GATH	E.O
3	Joseph Mulusya	SGAPI SARI GATH.	Surveyor
4	Mercy Makadu	SGAPI SARI GATH	Sociologist
5	Fredrick Charo		Assistant Chief
6	Rehema Said		Resident
7	Onesmus Masha		Resident
8	Mwanakombo Bambulo		Resident
9	Samuel Wanje		Resident
10	Jesca Dama		Resident
11	Kahonzi Baya		Resident
12	Nelson Mbogo		Resident
13	Mwalimu Kahindi		Resident
14	William Baya		Resident
15	Christine Chengo		Resident
16	Florence Charo		Resident
17	Irene Kitsao		Resident
18	Franklin Kaingu		Resident
19	Jonathan Mwagandi		Resident
20	Margaret Kamande		Resident
21	Hannington Mulikya		Resident
22	Geoffrey Muriithi		Resident
23	Wilson Sulubu		Resident
24	Harrison Kadenge		Resident
25	David Gunga		Resident

### ABBREVIATIONS

AE	Assistant Engineer
EO	Environmental officer
AOB	Any Other Business
Consultant	SARI GATH SGAPI

### AGENDA

1. Introduction
2. Reason for stakeholder Consultation
3. Current Water Sources and Challenges
4. Interventions to address the Challenges
5. Potential project Impacts (Positive and Negative)
6. Comments and Responses
7. A.O.B
8. Adjournment



MINUTE NO:	DESCRIPTION	ACTION BY
Mtg.1-01	<p><b><u>INTRODUCTION</u></b></p> <p>The Assistant Chief called the meeting to order at 1000 HRS. The meeting began with a word of prayer that was led by one of the residents. This was followed by brief self-introduction by all residents.</p> <p>The chief then invited the consultants (Assistant Engineer, Environmental Officer and Surveyor) who introduced themselves then stated the agenda of the meeting that was adopted.</p>	<b>All</b>
Mtg.1-02	<p><b><u>REASON FOR STAKEHOLDER CONSULTATION</u></b></p> <p>The Assistant Engineer gave a brief introduction of the Project scope. Then later welcomed the Environmental officer who briefed the participants on the reasons for holding a public meeting for the project. The participants were informed that this was to give them a chance to air their views about the proposed project, create awareness, request for their support, as well as adherences to legal requirement that requires the proponent to inform the area resident about their intention to implement a project in their area before commencement. Further to give them a chance to air their views, assist in anticipating impacts and recommending mitigations measures and create awareness of the proposed intervention</p>	<b>Consultant</b>
Mtg.1-03	<p><b><u>CURRENT WATER SOURCES AND CHALLENGES</u></b></p> <p>The stakeholders commented on the fact that water has been a major challenge due to its frequent shortages, high prices and occasional broken pipes despite the fact that they lived near the water source.</p>	<b>Consultant</b>
Mtg.1-04	<p><b><u>INTERVENTIONS TO ADDRESS THE CHALLENGE</u></b></p> <p>The Assistant Engineer mentioned the project implementation timelines and stated that the project would tentatively begin around October 2021 and take about a year to complete. He further stated that the pipes of DN 800mm for 29 km, there would also be a 5,000m<sup>3</sup> reinforced concrete tank.</p>	<b>Consultant</b>
Mtg.1-05	<p><b><u>POTENTIAL PROJECT IMPACTS (POSITIVE and NEGATIVE)</u></b></p> <p><b>Positive project impact</b></p> <ul style="list-style-type: none"> <li>Accessibility to clean and reliable water, hygiene and sanitation, reduced water and Improved sanitation burden to women, increased land values in the project area.</li> </ul> <p><b>Negative project impact</b></p> <ul style="list-style-type: none"> <li>Impacts on biophysical environment (Vegetation destruction, soils, water resources pollution or over abstraction)</li> </ul>	<b>Consultant</b>

	<ul style="list-style-type: none"> <li>• Social Environment (labor influx, child labor, gender inclusivity, human rights, teenage pregnancies, school dropouts, HIV and AIDS, resettlement issues.)</li> <li>• Health and Safety Impacts (Noise and vibrations, air pollution, accidents on site, fire disasters, public health)</li> </ul>	<b>Consultant</b>
Mtg.1-07	<p><b><u>COMMENTS AND RESPONSES</u></b></p> <p><b>Comment – Wayleave</b> The residents requested know if the project will affect them in terms of displacement in anyway.</p> <p><b>Response</b> The consultant informed the meeting that there will be no Demolitions or Displacements that were anticipated since the pipelines had been designed to follow the way leaves and this was confirmed during the surveys that were conducted - no one would be displaced and no private property would be interfered with.</p> <p><b>Comment – Job Requirements</b> The residents wanted to know if they will have to produce NHIF, NSSF and Certificate of Good conduct before they can be recruited.</p> <p><b>Response</b> They were informed that those requirements are not only mandatory but also a basic requirement of the law of Kenya, however, for casual labourers an Identification Card is mandatory.</p> <p><b>Comment – Backfilling request</b> The residents wanted to know how prompt the backfilling will be once excavation has been done.</p> <p><b>Response</b> The consultant informed the meeting that No access points will be left open without provision of access points or being backfilled for more than a day.</p> <p><b>Comment – Compensation</b> The community wanted to know if there will be any land and way leaves compensation.</p> <p><b>Response</b> For the pipeline route, it was noted that it will use the existing road reserve. The new proposed tank will be constructed at Kakuyuni Boys Secondary School and the client had were in negotiation to come up with a mutual agreement. In additional relevant permit from road authorities will be obtained before commencement of works along the reserves and</p>	<p>Resident</p> <p>Consultant</p> <p>Resident</p> <p>Consultant</p> <p>Resident</p> <p>Consultant</p> <p>Resident</p> <p>Consultant</p> <p>Resident</p>

	<p>there were no private properties, trees or crops that would be interfered with hence no one would require compensation</p> <p><b>Comment – Reinstatement</b></p> <p>The residents wanted to know if reinstatement of pipes that will be damaged during excavation will be considered</p> <p><b>Response</b></p> <p>The consultant informed the meeting that all reinstatements will be adequately handled by the contractor.</p>	<p>Consultant</p> <p>Resident</p> <p>Consultant</p>
Mtg.1-08	<p><b>A.O.B</b></p> <p>The Chief requested for cooperation from the community for smooth running of the project.</p>	<b>Chief</b>
Mtg. 1-09	<p><b>Adjournment</b></p> <p>The meeting was closed with a word of prayer from a resident at 1300 HRS.</p>	<b>All</b>

## MINUTES SIGNED AND AGREED UPON BY:

For and on behalf of Client (CWWDA)

SIGN [Signature] DATE 4-06-2021

For and on behalf of Local Administration (Assistant Chief)

SIGN [Signature] DATE 04/06/2021ASST. CHIEF  
LANGOBAYA SUB-LOCATION  
LANGOBAYA LOCATION  
DATE 04/06/2021

For and on behalf of Consultant (SARI GATH SGAPI)

SIGN [Signature] DATE 4/6/2021BY [Signature] DATE 4/6/2021



**CONSULTANCY SERVICES FOR FEASIBILITY STUDY, PREPARATION OF PRELIMINARY DESIGNS,  
DETAILED DESIGNS, SAFEGUARDS DOCUMENTS AND TENDER DOCUMENTS AND  
CONSTRUCTION SUPERVISION OF SECOND BARICHO – KAKUYUNI WATER PIPELINE AND  
TRANSMISSION PIPELINES TO KILIFI AND GANDA TANKS**

**MINUTES FOR PUBLIC CONSULTATION MEETINGS AND KEY STAKEHOLDERS INTERVIEWS HELD  
ON 7<sup>TH</sup> MAY 2021 AT KAKUYUNI**

<i>NATURE OF MEETING:</i>	<b>PUBLIC CONSULTATION</b>
<i>PARTIES IN ATTENDANCE:</i>	<b>CONSULTANT &amp; COMMUNITY</b>
<i>DATE:</i>	<b>MAY 7<sup>TH</sup> , 2021</b>
<i>VENUE:</i>	<b>KAKUYUNI</b>

## MINUTES FOR PUBLIC CONSULTATION MEETINGS AND KEY STAKEHOLDERS INTERVIEWS HELD ON 7<sup>TH</sup> MAY 2021 AT KAKUYUNI

### MEMBERS PRESENT- LIST OF ATTENDANCE IS ATTACHED

No.	Name	Organization	Designation
1.	Boniface Kogi	SGAPI SARI GATH	A.E
2	Lydia Mbogo	SGAPI SARI GATH	E.O
3	Joseph Mulusya	SGAPI SARI GATH.	Surveyor
4	Alphonse Kitsao Jefwa	Administration	Assistant chief
5	Farida Garama		Assistant Chief
6	Bendera Thoya		Village Elder
7	Naphtal Birya	Interior	
8	Samsom Kamunga		MCA
9	Nixon Mramba		
10	Samuel Jefwa		
11	Kithi Robert		
12	Benjamin Karisa		Resident
13	Masoud Ali		Resident
14	Athman Fadhili		Resident
15	Athmani Mangi		Resident
16	Ruth Yongo		Resident
17	Cosmas Mramba		Resident
18	Shalet Karisa		Resident
19	Vincent Karisa		Resident
20	Paul Mtawali		Resident
21	Francis Kitsao		Resident
22	Flevian Mwaria		Resident

### ABBREVIATIONS

AE	Assitant Engineer
EO	Environmental officer
AOB	Any Other Business
Consultant	SARI GATH SGAPI

### AGENDA

1. Introduction

2. Reason for stakeholder Consultation
3. Current Water Sources and Challenges
4. Interventions to address the Challenges
5. Potential project Impacts (Positive and Negative)
6. Comments and Responses
7. A.O.B
8. Adjournment

MINUTE NO:	DESCRIPTION	ACTION BY
Mtg.1-01	<p><b><u>INTRODUCTION</u></b></p> <p>The Chief called the meeting to order at 1015hrs. The meeting began with a word of prayer that was led by one of the residents. This was followed by brief self-introduction by all residents.</p> <p>The chief then invited the consultants (Assistant Engineer, Environmental Officer and Surveyor) who introduced themselves then stated the agenda of the meeting that was adopted.</p>	<b>All</b>
Mtg.1-02	<p><b><u>REASON FOR STAKEHOLDER CONSULTATION</u></b></p> <p>The Assistant Engineer gave a brief introduction of the Project scope. Then later welcomed the Environmental officer who briefed the participants on the reasons for holding a public meeting for the project.</p> <p>The participants were informed that this was to give them a chance to air their views about the proposed project, create awareness, request for their support, as well as adherences to legal requirement that requires the proponent to inform the area resident about their intention to implement a project in their area before commencement. Further to give them a chance to air their views, assist in anticipating impacts and recommending mitigations measures and create awareness of the proposed intervention.</p>	<b>Consultant</b>
Mtg.1-03	<p><b><u>CURRENT WATER SOURCES AND CHALLENGES</u></b></p> <p>The stakeholders commented on the fact that water has been a major challenge due to its frequent shortages, high prices and occasional broken pipes despite the fact that they lived near the water source.</p>	<b>Consultant</b>
Mtg.1-04	<p><b><u>INTERVENTIONS TO ADDRESS THE CHALLENGE</u></b></p> <p>The Assistant Engineer mentioned the project implementation timelines and stated that the project would tentatively begin around October 2021 and take about a year to complete. He further stated that the pipes of DN 800mm for 29 km and there would also be a reinforced concrete reservoir of capacity 5,000m<sup>3</sup> tank.</p>	<b>Consultant</b>
Mtg.1-05	<p><b><u>POTENTIAL PROJECT IMPACTS (POSITIVE and NEGATIVE)</u></b></p> <p><b>Positive project impact</b></p>	<b>Consultant</b>



	<ul style="list-style-type: none"> <li>• Accessibility to clean and reliable water, hygiene and sanitation, reduced water and Improved sanitation burden to women, Increased land values in the project area.</li> </ul> <p><b>Negative project impact</b></p> <ul style="list-style-type: none"> <li>• Impacts on biophysical environment (Vegetation destruction, soils, water resources pollution or over abstraction)</li> <li>• Social Environment (labor influx, child labor, gender inclusivity, human rights, teenage pregnancies, school dropouts, HIV and AIDS,)</li> <li>• Health and Safety Impacts (Noise and vibrations, air pollution, accidents on site, fire disasters, public health)</li> </ul>	
Mtg.1-07	<p><b><u>COMMENTS AND RESPONSES</u></b></p> <p><b>Comment – Cost of the proposed project</b> The residents requested to know the total project cost and how much was set aside for the CSR</p> <p><b>Response</b> The consultant informed the meeting that the project cost is approximately Ksh 2 billion, the residents were advised that during implementation and based on the budget some CSR proposals may be considered</p> <p><b>Comment – Functionality of the new proposed pipeline</b> The community wanted to know if they will be allowed to get water from the new pipeline once its complete.</p> <p><b>Response</b> The community will use the existing pipeline and additional water kiosks will be considered, however the new proposed rising main will only be used to supply water to Kakuyuni tanks.</p> <p><b>Comment – Job Requirements</b> The residents wanted to know if they will have to produce NHIF, NSSF and Certificate of Good conduct before they can be recruited.</p> <p><b>Response</b> They were informed that those requirements are not only mandatory but also a basic requirement of the law of Kenya, however, for casual labourers an Identification Card is mandatory.</p> <p><b>Comment – Sound Pollution</b> The residents wanted to know how sound pollution from the heavy machinery will be mitigated since one of the construction site is near a school compound (Proposed Kakuyuni Tank).</p> <p><b>Response</b></p>	<p>Resident</p> <p>Consultant</p> <p>Resident</p> <p>Consultant</p> <p>Resident</p> <p>Consultant</p> <p>Resident</p> <p>Consultant</p>

	<p>Minimal use of machinery will be used and when avoidable, use of machinery will be done with controlled noise production</p> <p><b>Comment – Compensation</b> The community wanted to know if there will be any land and way leaves compensation.</p> <p><b>Response</b> For the pipeline route, it was noted that it will use the existing road reserve. The new proposed tank will be constructed at Kakuyuni Boys Secondary School and the client had were in negotiation to come up with a mutual agreement. In additional relevant permit from road authorities will be obtained before commencement of works along the reserves and there were no private properties, trees or crops that would be interfered with hence no one would require compensation</p> <p><b>Comment – Non-Operational Kiosks</b> The residents wanted to know if they were any plans set aside for the non-functional kiosks.</p> <p><b>Response</b> The non-operational kiosks will be rehabilitated.</p>	<p>Resident</p> <p>Consultant</p> <p>Resident</p> <p>Consultant</p>
Mtg.1-08	<p><b>A.O.B</b> The Chief requested for cooperation from the community for smooth running of the project.</p>	<b>Chief</b>
Mtg. 1-09	<p><b>Adjournment</b> The meeting was closed with a word of prayer from a resident at 1130HRS</p>	<b>All</b>

## MINUTES SIGNED AND AGREED UPON BY:

For and on behalf of Client (CWWDA)

SIGN  DATE 4-06-2021

For and on behalf of Local Administration (Assistant Chief)

SIGN  DATE 4TH JUNE 2021

For and on behalf of Consultant (SARI GATH SGAPI)

SIGN  DATE 4/6/2021

BY Lydiah Mbogo DATE 4/6/2021



**CONSULTANCY SERVICES FOR FEASIBILITY STUDY, PREPARATION OF PRELIMINARY DESIGNS,  
DETAILED DESIGNS, SAFEGUARDS DOCUMENTS AND TENDER DOCUMENTS AND  
CONSTRUCTION SUPERVISION OF SECOND BARICHO – KAKUYUNI WATER PIPELINE AND  
TRANSMISSION PIPELINES TO KILIFI AND GANDA TANKS**

**MINUTES FOR PUBLIC CONSULTATION MEETINGS AND KEY STAKEHOLDERS INTERVIEWS HELD  
ON 6<sup>TH</sup> MAY 2021 AT JILORE**

<i>NATURE OF MEETING:</i>	<b>PUBLIC CONSULTATION</b>
<i>PARTIES IN ATTENDANCE:</i>	<b>CONSULTANT &amp; COMMUNITY</b>
<i>DATE:</i>	<b>MAY 6<sup>TH</sup>, 2021</b>
<i>VENUE:</i>	<b>JILORE</b>

## MINUTES FOR PUBLIC CONSULTATION MEETINGS AND KEY STAKEHOLDERS INTERVIEWS HELD ON 7<sup>TH</sup> MAY 2021 AT JILORE

### MEMBERS PRESENT- LIST OF ATTENDANCE IS ATTACHED

No.	Name	Organisation	Designation
1.	Boniface Kogi	SGAPI SARI GATH	A.E
2	Lydia Mbogo	SGAPI SARI GATH	E.O
3	Joseph Mulusya	SGAPI SARI GATH.	Surveyor
4	Mercy Makadu	SGAPI SARI GATH	Sociologist
5	Charles Mulewa		Chief
6	Nelly Kadzaha		Assistant Chief
7	Mwamure Masha		Resident
8	Hinzano Kadzaha		Resident
9	Ulice Mthengo		Resident
10	Amos Kahindi		Resident
11	John Chea		Resident
12	Christine Mwathethe		Resident
13	Nickson Mitsanze		Resident
14	Austin Mwamure		Resident
15	Alfred Kahindi		Resident
16	Elias Thoya		Resident
17	Peter Charo		Resident
18	Lucy Jumwa		Resident
19	Annet Katunda		Resident
20	Monica Maita		Resident
21	Lillian Sidi		Resident
22	Adija Munala		Resident
23	Pauline Kadzomba		Resident

### ABBREVIATIONS

AE	Assistant Engineer
EO	Environmental officer
AOB	Any Other Business
Consultant	SARI GATH SGAPI

### AGENDA

1. Introduction
2. Reason for stakeholder Consultation

3. Current Water Sources and Challenges
4. Interventions to address the Challenges
5. Potential project Impacts (Positive and Negative)
6. Comments and Responses
7. A.O.B
8. Adjournment

MINUTE NO:	DESCRIPTION	ACTION BY
Mtg.1-01	<p><b><u>INTRODUCTION</u></b></p> <p>The Chief called the meeting to order at 1400hrs. The meeting began with a word of prayer that was led by one of the residents. This was followed by brief self-introduction by all residents.</p> <p>The chief then invited the consultants (Assistant Engineer, Environmental Officer and Surveyor) who introduced themselves then stated the agenda of the meeting that was adopted.</p>	<b>All</b>
Mtg.1-02	<p><b><u>REASON FOR STAKEHOLDER CONSULTATION</u></b></p> <p>The Assistant Engineer gave a brief introduction of the Project scope. Then later welcomed the Environmental officer who briefed the participants on the reasons for holding a public meeting for the project. The participants were informed that this was to give them a chance to air their views about the proposed project, create awareness, request for their support, as well as adherences to legal requirement that requires the proponent to inform the area resident about their intention to implement a project in their area before commencement. Further to give them a chance to air their views, assist in anticipating impacts and recommending mitigations measures and create awareness of the proposed intervention.</p>	<b>Consultant</b>
Mtg.1-03	<p><b><u>CURRENT WATER SOURCES AND CHALLENGES</u></b></p> <p>The stakeholders commented on the fact that water has been a major challenge due to its frequent shortages, high prices and occasional broken pipes despite the fact that they lived near the water source.</p>	<b>Consultant</b>
Mtg.1-04	<p><b><u>INTERVENTIONS TO ADDRESS THE CHALLENGE</u></b></p> <p>The Assistant Engineer mentioned the project implementation timelines and stated that the project would tentatively begin around October 2021 and take about a year to complete. He further stated that the pipes of DN 800 for 29 km and DN 600 for 12.5 km, there would also be a 5,000m<sup>3</sup> tank.</p>	<b>Consultant</b>
Mtg.1-05	<p><b><u>POTENTIAL PROJECT IMPACTS (POSITIVE and NEGATIVE)</u></b></p> <p><b>Positive project impact</b></p> <ul style="list-style-type: none"> <li>• Accessibility to clean and reliable water, hygiene and sanitation, reduced water and Improved sanitation burden to women, Increased land values in the project area.</li> </ul> <p><b>Negative project impact</b></p>	<b>Consultant</b>

	<ul style="list-style-type: none"> <li>Impacts on biophysical environment (Vegetation destruction, soils, water resources pollution or over abstraction)</li> <li>Social Environment (labor influx, child labor, gender inclusivity, human rights, teenage pregnancies, school dropouts, HIV and AIDS, resettlement issues)</li> <li>Health and Safety Impacts (Noise and vibrations, air pollution, accidents on site, fire disasters, public health)</li> </ul>	
Mtg.1-07	<p><b><u>COMMENTS AND RESPONSES</u></b></p> <p><b>Comment – Compensation</b> The residents requested to know if they will receive compensation if disturbed or displaced during project construction.</p> <p><b>Response</b> For the pipeline route, it was noted that it will use the existing road reserve. The new proposed tank will be constructed at Kakuyuni Boys Secondary School and the client had were in negotiation to come up with a mutual agreement. In additional relevant permit from road authorities will be obtained before commencement of works along the reserves and there were no private properties, trees or crops that would be interfered with hence no one would require compensation</p> <p><b>Comment – Pipeline route</b> The community wanted to know the pipeline route.</p> <p><b>Response</b> They were informed that the pipeline will follow the old pipeline way leave to the proposed reservoir at Kakuyuni Secondary School.</p> <p><b>Comment – CSR</b> The community requested to know if the project will consider any CSR</p> <p><b>Response</b> The consultant informed the meeting that the project cost is approximately Ksh 2 billion, the residents were advised that during implementation and based on the budget some CSR proposals may be considered</p>	<p>Resident</p> <p>Consultant</p> <p>Resident</p> <p>Consultant</p> <p>Resident</p> <p>Consultant</p>
Mtg.1-08	<p><b>A.O.B</b> The Chief requested for cooperation from the community for smooth running of the project.</p>	<b>Chief</b>
Mtg. 1-09	<p><b>Adjournment</b> The meeting was closed with a word of prayer from a resident at 1630HRS.</p>	<b>All</b>



## MINUTES SIGNED AND AGREED UPON BY:

For and on behalf of Client (CWWDA)

SIGN  DATE 4-06-2021

For and on behalf of Local Administration (Chief)

SIGN  DATE 4.6.2021  


For and on behalf of Consultant (SARI GATH SGAPI)

SIGN  DATE 4/6/2021

BY Lydiah Mbugu DATE 4/6/2021

**Attendance Sheets**

**KEY INFORMANTS**





**THE WORLD BANK**  
IBRD - IDA | WORLD BANK GROUP



**SARI**  
CONSULTING LTD




**WATER AND SANITATION DEVELOPMENT PROJECT (WSDP)**

**CONSULTANCY SERVICES FOR PREPARATION OF PRELIMINARY DESIGNS, FEASIBILITY STUDY, DETAILED DESIGNS, SAFEGUARDS DOCUMENTS AND TENDER DOCUMENTS AND CONSTRUCTION SUPERVISION OF SECOND BARICHO – KAKUYUNI WATER PIPELINE AND TRANSMISSION PIPELINES TO KILIFI AND GANDA TANKS**

**LIST OF ATTENDANCE –** Public Consultation Meetings and Key Stakeholders Interviews DATE: May 05 - 08 2021  
April, 2021

No.	Name	Organization/Designation	Email	Phone No	Signature
1.	ISAAC CHIRIWA	MAWASCO / TM	ichirwa@gmail.com	0733161671	
2.	Lydia Mbogo	SARI / GATH - Consultant	lydia.mbogo@gath.com	0725171521	
3.	Bonifacio Kanan Kogi	SARI / GATH - Consultant Assistant Engineer	Kogi.bon@gmail.com	072594017	
4.	Joseph Mulusya	SARI / GATH - Consultant Surveyor	mulusya.j@gmail.com	079701625	
5.	Meraj Makadi	SARI / GATH - Consultant	merajmakadi@gmail.com	0700157376	
6.	COSMAS KAI	MAWASCO / TSCD OFFICER	cosmaskai@gmail.com	071442227	
7.	Jacinta M. Makau	CGK / planner	jacintam@yahoo.com	0721673041	
8.	EMMANUEL KAZUNGU MATITA	ADMIN. Country G. of Kiira	emmanuelk509@gmail.com	0726038045	
9.	JULIUS FUNDU	MUNICIPALITY OF MAINTA - ADMINISTRATOR	jeffundu123@gmail.com	0729855801	



THE WORLD BANK  
IBRD • IDA | WORLD BANK GROUP



No.	Name	Organization/Designation	Email	Phone No	Signature
10.	Linek Zabibu	Asst Env Officer Malindi SC	linekzabibu@gmail.com	0791705600	[Signature]
11.	John Kipstina	INTERIOR	olkenamindi2016@gmail.com	0722175631	[Signature]
12.	HELLY UTAZI KAREHA	ASSISTANT CHIEF	hmkareha@gmail.com	0720301180	[Signature]
13.	Hezekiah Mwarua	MD-KIMAWASCO	hmwarua@kimawasco.co.ke	0721379916	[Signature]
14.	Eng. G. Kingi Kanyo	CD WES	kingi.gorge49@gmail.com	0715895555	[Signature]
15.	Kutawa Diaka	CC - Kilifi	cc.kilifi@kenya.go.ke	072624634	[Signature]
16.	Joseph MATTHA	DOE ILLEI AREA	jmatthab@gmail.com	0720202-462	[Signature]
17.	Eric MATTHA	DOA-Kilifi	ematthab@gmail.com	0720202-462	[Signature]
18.					
19.					
20.					
21.					
22.					
23.					



THE WORLD BANK  
IBRD • IDA / WORLD BANK GROUP



## KEY INFORMANTS

### WATER AND SANITATION DEVELOPMENT PROJECT (WSDP)

CONSULTANCY SERVICES FOR PREPARATION OF PRELIMINARY DESIGNS, FEASIBILITY STUDY, DETAILED DESIGNS, SAFEGUARDS DOCUMENTS AND TENDER DOCUMENTS AND CONSTRUCTION SUPERVISION OF SECOND BARICHO – KAKUYUNI WATER PIPELINE AND TRANSMISSION PIPELINES TO KILIFI AND GANDA TANKS

#### LIST OF ATTENDANCE –

#### Public Consultation Meetings and Key Stakeholders Interviews

DATE: April, 2021

No.	Name	Organization/Designation	Email	Phone No	Signature
1.	NAPHTAL BIRWA INTERIOR	INTERIOR		0790571004	
2.	Pst. SAMSON A. KAMUNGA	BOM MEMBER - KAKUYUNI BOYS SEC.	Samsonwamunga10@gmail.com	0720248614 0737039118	
3.	NIXON MRAMBA	NCA	-	0722820383	
4.	SAMUEL JETWA TAA	BOM MEMBER - KAKUYUNI BOYS SEC	Samuel.jetwa2017@gmail.com	0723400180	
5.	KITHI ROBERT JOHNSON	DEPUTY PRINCIPAL KESS	Kithiwebur@gmail.com	0716647516	
6.	Eng. T. K. KENDAGOR	REGIONAL DIRECTOR - KERRA	tim222000@yahoo.co.uk	0722946237	
7.	Eng. Nicholas KARANJO	Director RTPW	karongodirectorroads@gmail.com	0723445006	
8.					
9.					





## WATER AND SANITATION DEVELOPMENT PROJECT (WSDP)

CONSULTANCY SERVICES FOR PREPARATION OF PRELIMINARY DESIGNS, FEASIBILITY STUDY, DETAILED DESIGNS, SAFEGUARDS DOCUMENTS AND TENDER DOCUMENTS AND CONSTRUCTION SUPERVISION OF SECOND BARICHO – KAKUYUNI WATER PIPELINE AND TRANSMISSION PIPELINES TO KILIFI AND GANDA TANKS

### LIST OF ATTENDANCE –

Public Consultation Meetings and Key Stakeholders Interviews

DATE: April, 2021

No.	Name	Organization/Designation	Email	Phone No	Signature
1.	CHARLES M. MULEWA	CHIEF	CMulewa62@gmail.com	0723532021	[Signature]
2.	NELLY U. KADZEMA	ASST. CHIEF	Nkadzema@gmail.com	0720301180	[Signature]
3.	MWAMURE MASHA	BALOGI KAKONCHI		0705347212	[Signature]
4.	HINZANO P. KADZEMA	HEAD TEACHER-JILORE	hinzanoPondaz@gmail.com	0728994666	[Signature]
5.	ULICE MTHENGO	W/PWD		0713226014	[Signature]
6.	AMOS KAHIMAI MUKARE	W/ELDER		0714663219	[Signature]
7.	JOHN N. CHUKA	PWD	johnchuka959@gmail.com	0714227035	[Signature]
8.	CHRISTINE P. MWATHITHI	W/ELDER		0717615795	[Signature]
9.	NICKSON K. MITSANZE	RELIGIOUS LEADER	mitsanze@gmail.com	0725639564	[Signature]



THE WORLD BANK  
IBRD • IDA | WORLD BANK GROUP



No.	Name	Organization/Designation	Email	Phone No	Signature
10.	AUSTINE MWAMURE YAA	YOUTH REPRESENTATIVE MPS OFFICE		0724362348	
11.	ALFRED KAHIRO	BALOZI		0721885164	
12.	ELIAS THOYA NDERO	BALOZI		0768677846	
13.	PETER CHARO MAITHA	BALOZI		0711784594	
14.	LUCY JUMWA KAINGU	VIELDER		0727513226	
15.	ANNET KATUNGA	VIELDER		0706089591	
16.	MONICA M MAITA	BALOZI		0725385951	
17.	LILIAN SIDI DTEKA	YOUTH REPRESENTATIVE		0114344923	
18.	ADISA KINGA KIMALA	BALOZI		0708819610	
19.	PAULINE G. KADZAMBIA	BALOZI		0720837827	
20.					
21.					
22.					
23.					



THE WORLD BANK  
IBRD - IDA | WORLD BANK GROUP

KAKUYUNI



## WATER AND SANITATION DEVELOPMENT PROJECT (WSDP)

CONSULTANCY SERVICES FOR PREPARATION OF PRELIMINARY DESIGNS, FEASIBILITY STUDY, DETAILED DESIGNS, SAFEGUARDS DOCUMENTS AND TENDER DOCUMENTS AND CONSTRUCTION SUPERVISION OF SECOND BARICHO – KAKUYUNI WATER PIPELINE AND TRANSMISSION PIPELINES TO KILIFI AND GANDA TANKS

### LIST OF ATTENDANCE –

### Public Consultation Meetings and Key Stakeholders Interviews

DATE: April, 2021

No.	Name	Organization/Designation	Email	Phone No	Signature
1.	ALPHONSE KISAO JEFUA	INTERIOR ASST. CHIEF		0723723682	
2.	FARIDA GARAMA MAZU	INTERIOR ASST. CHIEF		0703418518	
3.	BONDERA CHENGU THOM	VILLAGE ELDER		0715751113	
4.	NELLY K. MWENI	ELDER KKY.		0724596221	
5.	Priscilla Kibiki Kibindi			0714002366	
6.	ANNE SATHI			0742708509	
7.	SIMBEN H. ALA KAKA			0715081553	
8.	PAUL KABISA CHARO	VILAGE		0724614123	
9.	BENJAMIN KARISA AMANI	VILLAGE ELDER		0721101346	





THE WORLD BANK  
IBRD • IDA | WORLD BANK GROUP

KAKUYUNI



No.	Name	Organization/Designation	Email	Phone No	Signature
24.	MASUDA ALI SARA	Ustadh Al-Faiz Masch	masudaali024@gmail.com	072034107	
25.	ATHMAN FAHILI	KAKUYUNI - RESIDENT	akmanf@gmail.com	0983883400	
26.	ATHMANI MANGI	Mzee Nyumba Kumi		0726364673	
27.	Ruth yongo	KAKUYUNI - RESIDENT	ruthmwendey@gmail.com	0725058915	
28.	COSMAS MRAMBA	MONGOTINI -		0716192715	
29.	SHALET C. KARISA	MONGOTINI		0790503943	
30.	VINCENT F. KARISA	MONGOTINI		0708451952	
31.	PAUL MWASA HARE	MONGOTINI		0728116446	
32.	FRANCIS KITSAB NZARO	KAKUYUNI RESID	francis.kitsab.nzaro@gmail.com	0705144258	
33.	FLEVAN MWARIA KATAMA	KAKUYUNI BARO	mflevan@gmail.com	0725997285	
34.					
35.					
36.					



THE WORLD BANK  
IBRD • IDA | WORLD BANK GROUP

GANDA LOCATION



## WATER AND SANITATION DEVELOPMENT PROJECT (WSDP)

CONSULTANCY SERVICES FOR PREPARATION OF PRELIMINARY DESIGNS, FEASIBILITY STUDY, DETAILED DESIGNS, SAFEGUARDS DOCUMENTS AND TENDER DOCUMENTS AND CONSTRUCTION SUPERVISION OF SECOND BARICHO – KAKUYUNI WATER PIPELINE AND TRANSMISSION PIPELINES TO KILIFI AND GANDA TANKS

LIST OF ATTENDANCE – GANDA Public Consultation Meetings and Key Stakeholders Interviews

DATE: 14 April, 2021

No.	Name	Organization/Designation	Email	Phone No	Signature
1.	Bartholomew N. Kitinga	INTERIOR SENIOR CHIEF	ngumbao.kitinga@gmail.com	072954539	
2.	Omara Hassan Mwangi	INTERIOR ASST. CHIEF - GANDA	omara.goo@gmail.com	0727843520	
3.	Junat. Mwangi Omara	ASST - CHIEF - MERE	jumaasundia@gmail.com	0725688266	
4.	Annex Nemat Ziro	ASST. CHIEF - MIBABATA	anna.nemat@gmail.com	0721420055	
5.	Mathias Suberman Kasinga			0727912556	
6.	George Othman Kibitwa			0712156357	
7.	Esther 'Kau Kitinga			0711839446	
8.	Mwinyi M. M. Abubakar			0725691277	
9.	Samin Omar Abood			071320051	



THE WORLD BANK  
IBRD • IDA | WORLD BANK GROUP



No.	Name	Organization/Designation	Email	Phone No	Signature
10.	Amun Mungu Omar	MERE		0713506285 07112273	[Signature]
11.	Onemur Juma	MERE Resident		071837901	[Signature]
12.	Richard Mithake	MERE		0714013704	[Signature]
13.	Sais Omar Sais	Kenya	ajamalagency@gmail.com	0720297182	[Signature]
14.	Josphet Teno Othman	MERE		0710244194	[Signature]
15.	Al. Mohamed Mohamed	MERE		0790490216	[Signature]
16.	Abdullahi Wanjie	MERE		0719554199	[Signature]
17.	Florence Bait	MERE		0727249167	[Signature]
18.	Juma Khamisi	MERE		0798777297	[Signature]
19.	Omar Litchake Al.	Kenya		0743619763	omapi
20.	George Chango Kadhun	Kenya		0712156257	[Signature]
21.	RASHIDI KALU	Kenya		0711839446	RASHIDI
22.	Jonathan K. K. Nambura	MERE		0791721504	[Signature]
23.	Salim Omar Anadhi	Kenya		0713200501	[Signature]



THE WORLD BANK  
IBRD • IDA | WORLD BANK GROUP

GANDA

SUB LOCATION



No.	Name	Organization/Designation	Email	Phone No	Signature
24.	SAID OMAR SAID	GANDA		0720297182	
25.	KARARU NGIRI	MERE		0705146922	
26.	JOSPAT TEMO CHIKOLA	MERE		0710244194	
27.	RICHARD KARISA MIESANJE	MERE		0714013704	
28.	Abdulrehman Niema	MERE		0727566706	
29.	Kahindi Lawrence Kombe Karambiji			0711616013	
30.	LIASSOR HANNOU	MERE		0721204138	
31.					
32.					
33.					
34.					
35.					
36.					



### ESIA Key informant questionnaire

Coast Water Works Development Agency (CWWDA), through support from World Bank intends to augment water supply system in the towns of Malindi, Kisumu, Kilifi and Garissa and their surrounding environs within the Kilifi County by implementing Baricho - Kakuyuni Water Pipeline and Transmission Pipelines to Kilifi And Garissa Towns.

As provided in the second schedule of EMCA and its subsequent supplement of Environmental Regulations, 2009 and the constitution of Kenya such projects need to be subjected to an Environmental Impact Assessment (EIA) to ensure sustainability. This includes conducting consultation and public participation in the project areas. As part of the process, Coast Water Works Development Agency has appointed S&P / SOAPI / OATH JV to conduct ESIA for the proposed project. This questionnaire is part of public consultation that will be included in the EIA report.

You have been selected to participate in this exercise and we would highly appreciate your assistance for responding to all questions in this questionnaire adequately and appropriately as possible. Please fill in the following questionnaire giving in your comments where necessary.

You have been selected to participate in this exercise and we would highly appreciate your assistance for responding to all questions in this questionnaire adequately and appropriately as possible. Please fill in the following questionnaire giving in your comments where necessary.

Your response will be treated with confidentiality and will only be used for the purpose of this project.

Name of Institution KLRDA Date 24/07/2021

Name of Interviewer CONSULTANT

Name of the respondent Eng. T. K. Mwangi Signature [Signature] Gender M

Kindly fill in the questionnaire

#### SECTION A: GENERAL INFORMATION

1. What is your proximity to the proposed site

Length in Km	Too far/proximately
Less than 50	
50-100	
100-200	

1

Length in M	Yes/No/Probably
More than 200	<input checked="" type="checkbox"/>

1. What post views on water services in this area?

Yes/No/Probably	Yes/No/Probably
Good	<input checked="" type="checkbox"/>
Fair	
Poor	

2. Are you aware of the Proposed Construction of Sewer Baricho - Kakuyuni Water Pipeline and Transmission Pipelines to KGS and Genda Tanks?

Yes ☒ No ☐

3. Do you support the project?

Yes ☒ No ☐

4. State your concerns regarding implementation of the proposed project?

1. Sufficient coverage to the communities towns
2. Sustainability of the project going into the future
3. Development in Catchment areas on Sabaki River
4. Increased disruptions on the project by local
5. Technology transfer to local efforts
6. Employment creation to local communities.

5. Are there any viable options to this project?

Yes ☐ No ☒

a) Please name them and give reasons

N/A

## SECTION B: ANTICIPATED IMPACTS

7. What are the expected **POSITIVE** impacts of the project from construction phase through to commissioning and operations phases?

1. Increased availability of portable water
2. Increased economic activities
3. Improved Sanitation and health standards
4. Employment Creation to locals

8. What are the expected **NEGATIVE** impacts of the project from construction phase through to commissioning and operations phases?

1. Prevalence of diseases such as HIV/Aids
2. Environmental deforestation / soil erosion etc.
3. Displacement of population along pipeline route
4. Disruption of stocks such as Maize/powder, cattle feed etc.
5. Culture change

9. What suggestions would you make to mitigate any adverse environmental impacts during the project construction, commissioning and operations?

1. Conduct public participation
2. Create awareness to locals & institutions affected
3. Undertake a baseline study and suggest ways on mitigating on the adverse effects
4. Planting of trees to assist mitigate on adverse environmental effects

10. Please state the current environmental and social challenges in the project area?

1. Lack of basic amenities such as schools/health centres
2. Low education levels
3. Low health standards
4. Low conservation efforts on environment

11. Any relevant observations, recommendations or comments on this project

1



1. Project is going to be very helpful to community
2. My wish is that all project starts and completes within time, with high quality standards
3. Another phase to increase the coverage of the project to most areas in Kilifi County.

Signature



Tel No

0722946287

Stamp

